

# DEPARTMENT OF URBAN ENGINEERING THE UNIVERSITY OF TOKYO

UTdUE

## Outline of The Department

### Message from The Head of Department

With rapid growth of the world's population, over a half of us now live in cities. From inadequate infrastructures to the inequality of living standards, various kinds of urban problems are manifest, which require delicate solutions that can be achieved only by the experts with a wide view and deep thinking. We offer our students the grounds to learn various urban issues and to find their own solutions based on our 50 years of professional education. We welcome students who are intrigued by urban issues and willing to learn principles and application of urban engineering.

Yokohari Makoto

### Brief History

The Department of Urban Engineering was established in 1962, and the Graduate School Programs started in 1966. Around 120 undergraduate students and 170 graduate students, including 50 foreign students, are currently enrolled.

### Mission

Our mission is to provide students a profound basis to become experts in urban planning, design, and management. To fulfill a wide range of knowledge and skills required to become a specialist in the field, the department offers Urban Planning Course and Urban Environmental Engineering Course, both placing a strong emphasis on studio and/or experimental works in association with group discussions.

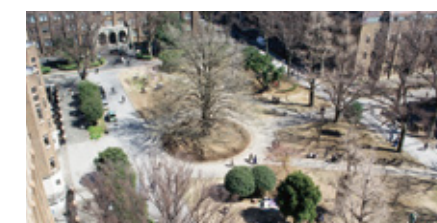
<http://www.due.t.u-tokyo.ac.jp/english/edu/>

### Research

Research topics at the Urban Planning Course include urban land use planning, urban design, territorial design, housing and urban analysis, urban information safety, international development and regional planning, urban transportation, landscape planning, spatial design and community design, planning and management. The Urban Environmental Engineering Course focuses on the research in environmental systems, environmental risk management, water environment technologies, urban water systems, urban resource management, urban sustainability science, and environmental microbial functions.

<http://www.due.t.u-tokyo.ac.jp/english/lab/>

## Campus Life in Tokyo





## Admission Information

### Regular Admission

See the school's webpage below for regular admission to enroll as Master's and Doctoral Student:  
<http://www.t.u-tokyo.ac.jp/soee/admission/general.html>

### International Admission

See the school's webpage below for international admission to enroll as Master's and Doctoral Student:  
<http://www.t.u-tokyo.ac.jp/soee/admission/special.html>  
Information on **Special Graduate Program for International Students in Urban and Environmental Studies (UBE-UPN/ENV)** is available on our web page:  
<http://www.due.t.u-tokyo.ac.jp/english/admission/>

### Research Students and Student Exchange

See the school's Office of International Students (OIS) webpage for the non-degree program:  
<http://ois.t.u-tokyo.ac.jp/admission/index.html>

See the school's Office of International Cooperation and Exchange webpage for student exchange:  
<http://www.oice.t.u-tokyo.ac.jp/exchange/index.html>

## Scholarships

The Graduate School of Engineering at the University of Tokyo provides financial assistance to students.

- University of Tokyo Fellowship; The University of Tokyo Special Scholarship for International Students
- SEUT Grant for International Students sponsored by the Graduate School of Engineering, the University of Tokyo
- Private Organizations' Scholarships recommended through the Graduate School of Engineering
- Asian Development Bank (ADB) -Japan Scholarship with a recommendation from the Department of Urban Engineering
- JICA 'Innovative Asia' / Scholarship to Japan

Please see below for more detailed information, including scholarships students can directly apply:  
[https://t-cens.iapply.t.u-tokyo.ac.jp/guidance\\_information/?id=application\\_tips\\_for\\_finance](https://t-cens.iapply.t.u-tokyo.ac.jp/guidance_information/?id=application_tips_for_finance)

## Accommodations

The University of Tokyo offers accommodations for international students and researchers as part of our efforts to promote international exchange in the education and research fields.

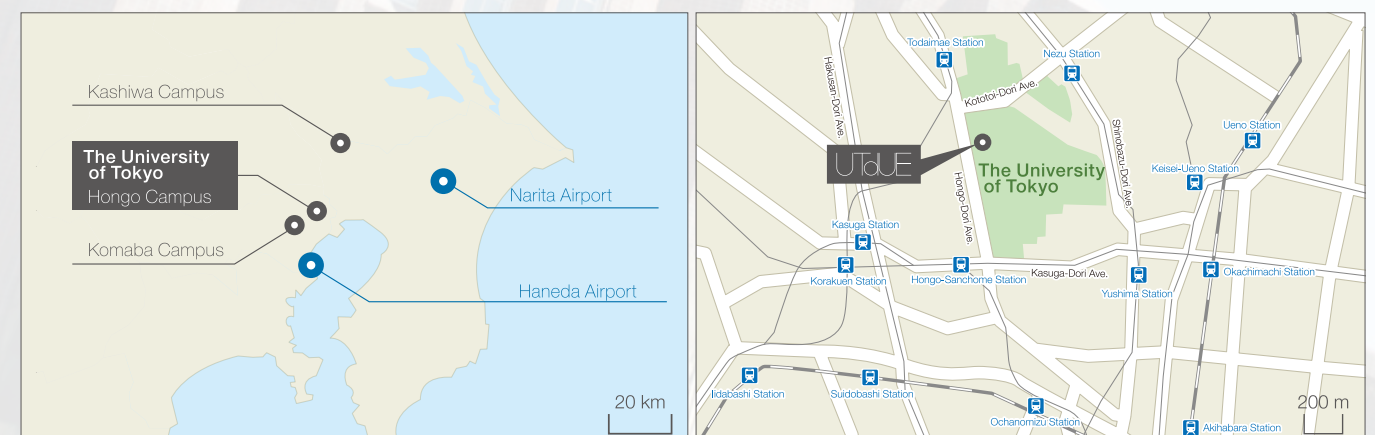
Two types of accommodation are available for international researchers and students at the University: residences operated by the University, and apartments and flats rented by private businesses.

Residences operated by the University are available at lower prices than private accommodations, and are furnished with basic appliances students need upon arrival. Each residence aims to promote international exchange and engages in activities to encourage communication among residents.

Private accommodation, on the other hand, enables you to secure housing at locations close to your campus that are convenient for shopping and amenities. The costs of renting privately, however, are higher than the costs of renting from the University.



## The University of Tokyo Maps



UTdUE

7-3-1 Hongo, Bunkyo-ku, Tokyo 113-8656, JAPAN  
Department of Urban Engineering,  
Graduate School of Engineering, The University of Tokyo  
Tel. 81-3-5841-6215 Fax. 81-3-5841-0370  
E-mail to Foreign Student Office: [fso@ue.t.u-tokyo.ac.jp](mailto:fso@ue.t.u-tokyo.ac.jp)

Published in Dec. 2019



## Voices of International Students



Christopher Sean Gandy  
Collaborative Community Design Laboratory

Immediately upon entry, one is able to fully spread their wings and begin pursuing their individual interests regarding the vast field of planning. While many graduate programs place more emphasis on pre-determined coursework, here one will find a more liberal approach emphasizing the methodological analysis of one's own original thinking and consequential data collection towards the production of a powerful thesis. Moreover, one is free to join a multitude of practical projects spanning the globe that are being tackled by each laboratory. If you are driven, independent, and desire growth please consider applying. Looking forward to hopefully learning with you!



Soyoung Lee  
Environmental Risk Management  
and Quality Control Technology Laboratory

"Doctoral degree in urban environmental engineering in UTokyo is for challenging to the new field in urban environmental research". Long history of urban engineering sometimes makes the researches stay in old ideas, however, all faculty members of our department encourage all students to conduct more creative research work. By using background from other majors or collaborating with other research institute, we are working to expand our research field. Warm and opened mind of all the members are another attractive aspect to students who want to pursue our works in active and creative way.



Sachithra Imbulana  
Urban Water Systems Laboratory

Being selected for a master's degree at DUE of UTokyo is a dream coming true and a huge milestone in my professional life. DUE has provided me with the opportunity to explore issues and trends in water supply engineering in an international platform, where I can share knowledge with students from around the world. The enormous resource base, guidance and teachings of veteran professors, ample opportunities to improve soft skills, friendly study environment and supportive staff and colleague have undoubtedly made my life much easier and memorable at DUE. If you're hard-working and passionate about this field, DUE is certainly the perfect place for you.

## Voices of International Alumni/ae



Arindam Biswas  
Indian Institute of Technology Roorkee

Presently, I am working as Assistant Professor at the Department of Architecture & Planning, IIT Roorkee, India. My research areas include urban planning, housing, institution and governance, inclusion and informality, regional science, economic growth & urbanization, and resilience. My present journey as an academican started at DUE. I have learnt research acumen, perseverance, dedication and determination for innovative research. I cherish my moments of intense discussions with Sensei(s) and the academic debates during the lab meetings. DUE is one of the finest place to learn about urban issues. Come and fall in love with research at DUE, and enter into a life-long academic and professional network.



Emrah Engindeniz  
United Nations Human Settlements Programme

I have been working for UN-Habitat. We are supporting Somali government in three governance tiers (local, state and federal) in capacity development and designing policy, law, regulations for decentralized service delivery for basic services. I think in DUE, at Housing and Urban Analysis Lab., was one of the best learning venues I have ever been. Particularly the lab's weekly meetings were invaluable to my learning and knowledge. I think you should expect that this is a great opportunity to be exposed to wide range of cutting edge researches, topnotch professors to learn from, and importantly amazing city, people and culture to live with.



Joong-Eun Kim  
Korea Research Institute for Human Settlements

I am currently working at Korea Research Institute for Human Settlements (KRIHS) belonging to the Office for Government Policy Coordination, Prime Minister's Secretariat. At DUE, I studied the change of physical and demographic characteristics of new town residents from the initial stage of new town development to the present through the case of Japan. DUE have excellent faculty, laboratories and curriculum to enable you to walk beyond familiar grounds so you can discover new perspectives and become more creative to prepare for the new era. You can also get a chance to enhance your social and cultural experiences in Tokyo as well as academic achievement.



Joana Portugal-Pereira  
Federal University of Rio de Janeiro

I am a Visiting Professor in the Energy Planning Department, at the Graduate School of Engineering of the Federal University of Rio de Janeiro (PPE/COPPE/UFRJ), developing research about bioenergy, low-carbon energy systems, climate policy, and environmental co-benefit strategies. During my doctoral studies, I learnt advanced analytical skills to conduct independent research. I also gain abilities to work in interdisciplinary and multicultural environments during field. When you join in DUE, you will be supervised by excellent professionals and fellow colleagues eager to help you. During my student times, I developed life-long friendships and professional relationships. You will be in very good hands!



Habuer  
Kyoto University

I am currently working for Environment Preservation Research Center, Kyoto University. During my doctoral studies in Urban Environmental Engineering, I learnt a lot. For example, I learnt advanced analytical skills of environmental assessment field, and got ability with logical thinking. There are many international students in the department such as Chinese, Korean, Indian, Bengalese, and American and so on. You are able to become friends through cross-cultural communication. Also, many kind Japanese students are able to guide you to deeply understand Japanese culture such as Sushi, Kabuki, Shrine, Sake and whatever you want to know!



G.G. Tushara Chaminda  
University of Ruhuna, Sri Lanka

I'm currently working as a Senior Lecturer at the Faculty of Engineering, University of Ruhuna, Sri Lanka. I got my Ph.D. from Department of Urban Engineering in year 2008. Study in the Department of Urban Engineering, one will always get chance to enhance their network, friendship, professional relationship that will become a very valuable asset for their future carrier. If you are a person who wants to take challenge in a multicultural and international academic environment and want to see your next level of achievements, then the Department of Urban Engineering is the place for you.

## Department of Urban Engineering Projects in the World

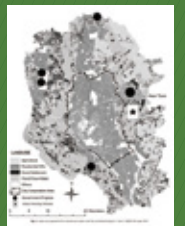
### California

Virolological safety issues in portable water reuse. Photo of RO membrane at water reclamation facility in Orange County.



### Bangladesh

Role of NGOs in public and private land development: The case of Dhaka city



### Palau

Sustainability assessment of the dietary life in islandcommunities



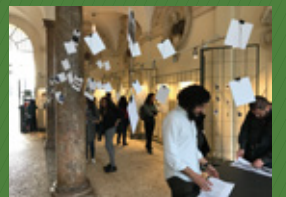
### Japan

Recovery planning from the Great East Japan Earthquake, etc.



### Italy

Collaborative research and education on urban and landscape planning in shrinking cities



### Philippines

Development of community-based water supply systems for remote islands in the Philippines





# Faculty Members



 <b>ASAMI Mari</b> Professor, Ph.D. Environmental Risk Management, Water Supply Engineering	 <b>FUKUSHI Kensuke</b> Professor, Ph.D. Hazardous Material Management, Risk Management, Regional Water Environment Management	 <b>FURUMAI Hiroaki</b> Professor, D. Eng. Conservation of Water Quality and Aqua-ecosystem, Urban Drainage and Diffuse Pollution, Modeling and Control of Biological Processes	 <b>HASHIMOTO Takashi</b> Lecturer, Ph.D. Water Purification Technology, Water System in Developing Countries
 <b>KASUGA Ikuro</b> Associate Professor, Ph.D. Environmental Microbiology, Biological Water/Wastewater Treatment	 <b>KATAYAMA Hiroyuki</b> Professor, Ph.D. Water Quality Public Health, Waterworks Engineering, Environmental Microbiology	 <b>KAZAMA Shinobu</b> Project Lecturer, Ph.D. Environmental Virology, Environmental and Sanitary Engineering, Water Environment	 <b>KURISU Futoshi</b> Associate Professor, Ph.D. Microbial Ecology and Water Engineering, Groundwater/Soil Bioremediation, Environmental Chemical Analysis
 <b>KURISU Kiyo</b> Associate Professor, Ph.D. Pro-environmental Behavior, Environmental System Evaluation, Low Carbon Society, Waste Management	 <b>MINO Takashi</b> Professor, D. Eng. Environmental Microbiology, Biological Wastewater Treatment	 <b>MORIGUCHI Yuichi</b> Professor, Ph.D. Resource Cycle Management, Life Cycle Analysis, Industrial Ecology	 <b>NAKAJIMA Fumiyuki</b> Professor, Ph.D. Ecotoxicology, Urban Drainage, Water Quality Control
 <b>NAKATANI Jun</b> Lecturer, Ph.D. Life Cycle Assessment, Material flow analysis, Plastic recycling system	 <b>OGUMA Kumiko</b> Associate Professor, Ph.D. Water Treatment Technologies, Water Supply Systems, Environmental Microbiology	 <b>ONUKI Motoharu</b> Associate Professor, Ph.D. Environment and Sustainability, Disaster and Sustainability, Sustainability Education	 <b>SATOH Hiroyasu</b> Associate Professor, Ph.D. Environmental Microbiology, Environmental Chemical Analysis, Biological Wastewater Treatment
 <b>SHIBUO Yoshihiro</b> Project Associate Professor, Ph.D. Urban Hydrology, Watershed Environment Management, Water related Disaster Management	 <b>TAKIZAWA Satoshi</b> Professor, D. Eng. Water Supply Engineering, Water and Wastewater Treatment	 <b>TOBINO Tomohiro</b> Lecturer, Ph.D. Environmental Microbiotechnology, Biological Wastewater Treatment, Microbial Community Analysis	 <b>YANAGIHARA Miina</b> Project Assistant Professor, Ph.D. Diffuse pollution, Ecotoxicology

## Urban Environmental Engineering Course

 <b>ASAMI Yasushi</b> Professor, Ph. D. Housing Policy, Residential Environment Habitation System, Spatial Information Analysis	 <b>DEGUCHI Atsushi</b> Professor, D. Eng. Urban Design, Urban Redevelopment, Compact City, Area Management	 <b>GOTO Chikako</b> Project Lecturer, Ph.D. Collaborative Community Design, Planning, and Management	 <b>HARATA Noboru</b> Professor, D. Eng. Urban Transportation Planning, Transportation Systems Analysis, Travel Behavior Analysis
 <b>HINO Kimihiro</b> Associate Professor, Ph.D. Urban Dwelling, OPTED (Crime Prevention through Environmental Design)	 <b>HIROI U</b> Associate Professor, Ph.D. Urban Disaster Mitigation, Risk Engineering	 <b>IIDA Akiko</b> Project Lecturer, Ph.D. Landscape and Environmental Planning, Conservation of Cultural Landscape	 <b>KATO Takaaki</b> Professor and Project Professor, D. Eng. Planning and Engineering for Social Safety System, Community-based Planning for Disaster Mitigation
 <b>KIDOKORO Tetsuo</b> Professor, Ph.D. International Development and Regional Planning, Urban Planning in Developing Countries	 <b>KOIZUMI Hideki</b> Professor, Ph.D. Collaborative and Communicative Planning, Community Design, Development and Management	 <b>KUBOTA Aya</b> Project Professor, Ph.D. Urban Design, Recovery Design Theory, Territorial Planning	 <b>MANABE Rikutarō</b> Assistant Professor, Ph.D. Information in City Planning, Citizens Participation with ICT
 <b>MIYAGI Shunsaku</b> Professor, Ph.D. Landscape Design and Planning, Urban Design	 <b>MURAYAMA Akito</b> Associate Professor, Ph.D. Planning, Community Development, Planning Methodology	 <b>NAGANO Masayoshi</b> Assistant Professor, M. Eng. Urban Design, Spatial Design, Architectural Design	 <b>NAKAJIMA Naoto</b> Associate Professor, Ph.D. Urban Design, Theory of Urbanism, Planning History
 <b>OSHIMA Kohei</b> Assistant Professor, M.Env. Architectural Design, Environmental Design	 <b>SADAHIRO Yukio</b> Professor, Ph.D. Geographical Information Systems, Spatial Analysis	 <b>SETA Fumihiko</b> Associate Professor, Ph.D. National and Urban Planning, Regional Development, Global Cities	 <b>SHIN Yuta</b> Project Assistant Professor, M.F.A. Architectural Design, Rural Community and Planning
 <b>TAKAMI Kiyoshi</b> Associate Professor, Ph.D. Urban Transportation Planning, Integrated Planning of Transport and Land Use	 <b>TRONCOSO PARADY Giancarlos</b> Assistant Professor, Ph.D. Transportation Planning, Travel Behavior Analysis, Spatial Analysis and Design	 <b>USUI Hiroyuki</b> Assistant Professor, Ph.D. Urban Analysis, Geographical Information Science, Residential Environment	 <b>YAMAZAKI Takahiro</b> Project Assistant Professor, Ph.D. Landscape and Urban Planning, Urban ecology
 <b>YOKOHARI Makoto</b> Head of Department Professor, Ph.D. Landscape and Environmental Planning			

## Urban Planning Course