



THE UNIVERSITY OF TOKYO

DEPARTMENT OF URBAN ENGINEERING

THE UNIVERSITY OF TOKYO

UTaUE

Outline of The Department

Message from Department Head

With rapid population growth and industrialization all over the world, more than a half of the people live in cities. From inadequate infrastructure to the inequality of local living standards, various kinds of urban problems have been manifest, which would require complicated and delicate solutions that can be designed only by experts with wide scoping and deep thinking. The Department provides knowledge grounds to learn various range of urban and environmental issues and to find solutions based upon our distinguished experience of professional education for five decades. The Department sincerely welcomes all the students who are intrigued by urban and environmental issues and eager to learn theories and applications of urban engineering with us.

Professor Hiroyuki Katayama, Department Head

Brief History

The Department of Urban Engineering was established in 1962, and the Graduate School Programs started in 1966. Around 120 undergraduate students and 170 graduate students, including 50 foreign students, are currently enrolled.

Mission

Our mission is to provide students a profound basis to become experts in urban planning, design, and management. To fulfill a wide range of knowledge and skills required to become a specialist in the field, the department offers Urban Planning Course and Urban Environmental Engineering Course, both placing a strong emphasis on studio and/or experimental works in association with group discussions.

<http://www.due.t.u-tokyo.ac.jp/english/edu/>

Research

Research topics at the Urban Planning Course include urban land use planning, urban design, housing and urban analysis, urban information and safety, international development and regional planning, urban transportation, collaborative community design, environmental planning and design, spatial planning and design, social safety system. The Urban Environmental Engineering Course focuses on the research in environmental risk management and quality control technology, water environment technologies, urban water systems, regional circulating and ecological system, urban sustainability science, social ecological system, environmental public health engineering, and sewerage system innovation.

<http://www.due.t.u-tokyo.ac.jp/english/lab/>



Admission Information

Regular Admission

See the school's webpage below for regular admission to enroll as Master's and Doctoral Student:
<http://www.t.u-tokyo.ac.jp/soee/admission/general.html>

International Admission

See the school's webpage below for international admission to enroll as Master's and Doctoral Student:
<http://www.t.u-tokyo.ac.jp/soee/admission/special.html>
Information on **Special Graduate Program for International Students in Urban and Environmental Studies (UBE-UPN/ENV)** is available on our web page:
<http://www.due.t.u-tokyo.ac.jp/english/admission/>

Research Students and Student Exchange

See the school's Office of International Students (OIS) webpage for the non-degree program:
<http://ois.t.u-tokyo.ac.jp/admission/index.html>
See the school's Office of International Cooperation and Exchange webpage for student exchange:
<http://www.oice.t.u-tokyo.ac.jp/exchange/index.html>

Scholarships

The Graduate School of Engineering at the University of Tokyo provides financial assistance to students.

- University of Tokyo Fellowship; The University of Tokyo Special Scholarship for International Students
- SEUT Grant for International Students sponsored by the Graduate School of Engineering, the University of Tokyo
- Private Organizations' Scholarships recommended through the Graduate School of Engineering
- Asian Development Bank (ADB) -Japan Scholarship with a recommendation from the Department of Urban Engineering
- JICA 'Innovative Asia' / Scholarship to Japan

Please see below for more detailed information, including scholarships students can directly apply:
https://t-cens.t.u-tokyo.ac.jp/guidance_information/?id=overview

Accommodations

The University of Tokyo offers accommodations for international students and researchers as part of our efforts to promote international exchange in the education and research fields.

Two types of accommodation are available for international researchers and students at the University: residences operated by the University, and apartments and flats rented by private businesses.

Residences operated by the University are available at lower prices than private accommodations, and are furnished with basic appliances students need upon arrival. Each residence aims to promote international exchange and engages in activities to encourage communication among residents.

Private accommodation, on the other hand, enables you to secure housing at locations close to your campus that are convenient for shopping and amenities. The costs of renting privately, however, are higher than the costs of renting from the University.

Campus Life in Tokyo



Faculty Members

	FUJITA Tsuyoshi Professor, Dr.Eng. Eco City Planning, Urban Industrial Symbiosis, SDGs City		FUKUSHI Kensuke Professor, Ph.D. Hazardous Material Management, Risk Management, Regional Water Environment Management		GOMI Ryota Project Associate Professor, Ph.D. Environmental sanitation engineering, Environmental microbiology, Genomic microbiology		HASHIMOTO Takashi Associate Professor, Ph.D. Water Purification Technology, Water System in Developing Countries
	HIKI Kyoshiro Lecturer, Ph.D. Ecotoxicity assessment, Chemical risk management, Urban stormwater management		KUSUGA Ikuro Associate Professor, Ph.D. Environmental Microbiology, Biological Water/Wastewater Treatment		KATAYAMA Hiroyuki Department Head Professor, Ph.D. Water Quality Public Health, Waterworks Engineering, Environmental Microbiology		KATO Hiroyuki Project Associate Professor, Dr. Environmental Science. Waste Water Treatment Technologies, Water Policy, PPP/PFI
	KAZAMA Shinobu Associate Professor, Ph.D. Environmental Virology, Environmental and Sanitary Engineering, Water Environment		KITAJIMA Masaaki Project Professor, Ph.D. Environmental virology, Wastewater epidemiology, Microbial risk management		KURISU Futoshi Professor, Ph.D. Microbial Ecology and Water Engineering, Groundwater/Soil Bioremediation, Environmental Chemical Analysis		KURISU Kiyo Associate Professor, Ph.D. Pro-environmental Behavior, Environmental System Evaluation, Low Carbon Society, Waste Management
	LIU MiaoMiao Project Assistant Professor, Ph.D. Environmental microbiology, Wastewater epidemiology, Water treatment technology		NAKAJIMA Fumiyuki Professor, Ph.D. Ecotoxicology, Urban Drainage, Water Quality Control		NAKATANI Jun Associate Professor, Ph.D. Life cycle assessment, Material flow analysis, Resource circulation		OGUMA Kumiko Professor, Ph.D. Water Treatment Technologies, Water Supply Systems, Environmental Microbiology
	ONUKI Motoharu Associate Professor, Ph.D. Environment and Sustainability, Disaster and Sustainability, Sustainability Education		PHAM Viet Dung Project Assistant Professor, Ph.D. earthy odor removal, wastewater reuse, risk assessment, wastewater treatment		SATOH Hiroyasu Professor, Ph.D. Environmental Microbiology, Biological Wastewater Treatment		SYUTSUBO Kazuaki Professor, D. Eng. Appropriate Wastewater Treatment, Anaerobic Digestion, Technology Evaluation and Implementation
	TOBINO Tomohiro Associate Professor, Ph.D. Environmental Microbiotechnology, Biological Wastewater Treatment, Microbial Community Analysis		TORII Shotaro Lecturer, Ph.D. Environmental Virology, Water Treatment, Disinfection		YAMASHITA Naho Assistant Professor, Ph.D. Environmental system engineering, Material stock and flow, Waste and resource circulation		

Urban Environmental Engineering Course

	DEGUCHI Atsushi Professor, D. Eng. Urban Design, Urban Redevelopment, Compact City, Area Management		HASEGAWA Daisuke Project Lecturer, Ph.D. Urban Analytics, Spatial Information Science, Local Public Transport Planning		HINO Kimihiro Associate Professor, Ph.D. Urban Well-being, Crime Prevention, Walkability, Housing Policy		HIROI U Professor, Ph.D. Disaster Risk Reduction Risk Engineering
	IIDA Akiko Project Lecturer, Ph.D. Urban ecology, Urban food system, Environmental design		INOUE Takuo Project Assistant Professor, Ph.D. Urban Planning, Place, Volunteered Geographic Information		KATO Takaaki Professor and Project Professor, D. Eng. Planning and Engineering for Social Safety System, Community-based Planning for Disaster Mitigation		KOIZUMI Hideki Professor, Ph.D. Collaborative and Communicative Planning, Community Design, Development and Management
	LUO Lichen Assistant Professor, Ph.D. Travel Demand Modeling, Travel Behavior Analysis, Transport Simulation, Land Use and Transport Integration		MANABE Rikutarō Professor, Ph.D. Information in City Planning		MURAYAMA Akito Professor, Ph.D. Planning Methodology, Climate Solutions in Urban Planning and Design		NAGANO Masayoshi Assistant Professor, M. Eng. Urban Design, Spatial Design, Architectural Design
	NAKAJIMA Hiroki Project Lecturer, Ph.D. Urban Regeneration, Urban Governance, Regenerative Design		NAKAJIMA Naoto Professor, Ph.D. Urban Design, Theory of Urbanism, Planning History		NISHI Hayato Project Lecturer, Ph.D. Statistical Urban Analysis, Spatial Statistics, Housing & Real Estate Market Analysis		NITANAI Ryoichi Assistant Professor, Ph.D. Urban planning, Place-shaping for ageing society, Community strategy
	PARADY Giancarlos Lecturer, Ph.D. Transportation Planning, Travel Behavior Analysis, Social Networks		SADAHIRO Yukio Professor, Ph.D. Geographical Information Systems, Spatial Analysis		SAKAMOTO Keisuke Assistant Professor, Ph.D. Shrinking city, Urban-rural planning, Greening technology		SETA Fumihiko Associate Professor, Ph.D. National and Urban Planning, Regional Development, Global Cities
	SHIN Yuta Project Assistant Professor, M.F.A. Architectural Design Rural Community and Planning		SHO Kojiro Associate Professor, Ph.D. Urban space in Asian cities, Gentrification theory, Participatory planning		TAKAMI Kiyoshi Associate Professor, Ph.D. Urban Transportation Planning, Integrated Planning of Transport and Land Use		TAKATORI Chika Associate Professor, Ph.D. Environmental Planning, Landscape Design
	WATANABE Ichiro Project Assistant Professor, Ph.D. Data Science, Innovation Studies, Walkability		YANG Yerim Project Assistant Professor, Ph.D. Community-based Network, Architectural Design		YOSHIE Shun Lecturer, Ph.D. Urban Design, Urban Regeneration, Planning Philosophy		

Urban Planning Course

Voices of International Students



Christopher Sean Gandy
Collaborative Community Design Laboratory

Immediately upon entry, one is able to fully spread their wings and begin pursuing their individual interests regarding the vast field of planning. While many graduate programs place more emphasis on pre-determined coursework, here one will find a more liberal approach emphasizing the methodological analysis of one's own original thinking and consequential data collection towards the production of a powerful thesis. Moreover, one is free to join a multitude of practical projects spanning the globe that are being tackled by each laboratory. If you are driven, independent, and desire growth please consider applying. Looking forward to hopefully learning with you!



Tiamenla Lanuyanger
Water Environment Technology Laboratory

The Department of Urban Engineering provides an open and supportive environment where students can truly engage with their research. Professors offer insightful feedback, and lab discussions encourage critical thinking and meaningful exchanges. There is the freedom to explore ideas, ask questions, and grow academically. Being surrounded by students from different backgrounds also adds a unique learning experience, making both research and daily interactions more enriching. This is a place where curiosity is nurtured, and confidence in research is built step by step.



Yan Tung LO
Environmental Public Health Engineering Laboratory

I embarked on my journey in the Department of Urban Engineering as a master's student and decided to continue my doctoral studies here. The department offers a dynamic and inclusive academic environment where students can engage in diverse lectures covering water and wastewater treatment technologies, and environmental microbiology. Beyond academics, the department fosters a strong international community, allowing students to connect with peers from different cultural backgrounds while also improving their Japanese language skills. The faculty members, both within and beyond your own research group, are always open to discussions and provide invaluable insights to support your academic journey. If you are passionate about tackling global sustainability challenges and eager to grow in a collaborative setting, we warmly welcome you to join us!

Voices of International Alumni/ae



Arindam Biswas
Indian Institute of Technology Roorkee

Presently, I am working as Associate Professor at the Department of Architecture & Planning, IIT Roorkee, India. My research areas include urban planning, housing, institution and governance, inclusion and informality, regional science, economic growth & urbanization, and resilience. My present journey as an academician started at DUE. I have learnt research acumen, perseverance, dedication and determination for innovative research. I cherish my moments of intense discussions with Sensei(s) and the academic debates during the lab meetings. DUE is one of the finest place to learn about urban issues. Come and fall in love with research at DUE, and enter into a life-long academic and professional network.



Emrah Engindeniz
United Nations Human Settlements Programme

I have been working for UN-Habitat since October 2011, initially for Somalia Programme on local governance programme and currently for a global flagship programme on participatory slum upgrading. I am based in Nairobi at UN-Habitat global Headquarter. I think in DUE, at Housing and Urban Analysis Lab., was one of the best learning venues I have ever been. Particularly the lab's weekly meetings were invaluable to my learning and knowledge. I think you should expect that this is a great opportunity to be exposed to wide range of cutting edge researches, topnotch professors to learn from, and importantly amazing city, people and culture to live with.



Joong-Eun Kim
Korea Research Institute for Human Settlements

I am currently working at Korea Research Institute for Human Settlements (KRIHS) belonging to the Office for Government Policy Coordination, Prime Minister's Secretariat. At DUE, I studied the change of physical and demographic characteristics of new town residents from the initial stage of new town development to the present through the case of Japan. DUE have excellent faculty, laboratories and curriculum to enable you to walk beyond familiar grounds so you can discover new perspectives and become more creative to prepare for the new era. You can also get a chance to enhance your social and cultural experiences in Tokyo as well as academic achievement.



Ronita Bardhan
University of Cambridge

I am Associate Professor of Sustainable Built Environment at University of Cambridge, UK, working on data-driven sustainable design of built environments to decouple health stress and energy burdens from poverty. I started my research endeavour at University of Tokyo, Department of Urban Engineering (DUE), where I pursued PhD in environmental systems engineering. DUE is uniquely placed to encourage and enable high quality innovative research. Its diverse and inclusive research environment, structured curriculum with regular feedback, and rigorous peer review system provides equal opportunity for researchers to immerse in the rich culture of knowledge exchange. The DUE professors are exceptional in their fields, providing the kind of constructive criticism and enthusiastic encouragement that can help steer early-career researchers into an impactful research pathway. Because of DUE, I have made friends for life and built an incredible network of research partners. In conclusion, DUE is the place to be if you want to advance your career and make a difference through your research.



Habuer
Okayama University

I'm an Assistant Professor at the Graduate School of Environmental, Life, Natural Science and Technology, Okayama University Japan. During my doctoral course studies in Urban Environmental Engineering, I learned a lot. I learned advanced analytical skills in the environmental assessment field and developed an ability for logical thinking as well. There are many international students in the department, such as Chinese, Korean, Indian, Bangladeshi, American, and so on. You all can become friends through cross-cultural communication. Besides, many Japanese students can guide you to deeply understand Japanese culture, such as Sushi, Kabuki, Sake, and whatever you want to know!



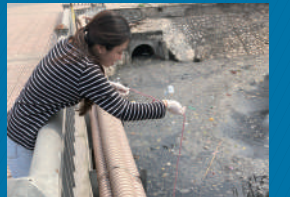
G.G. Tushara Chaminda
University of Ruhuna, Sri Lanka

I'm currently working as a Professor at the Faculty of Engineering, University of Ruhuna, Sri Lanka. I got my Ph.D. from Department of Urban Engineering in year 2008. Study in the Department of Urban Engineering, one will always get chance to enhance their network, friendship, professional relationship that will become a very valuable asset for their future carrier. If you are a person who wants to take challenge in a multicultural and international academic environment and want to see your next level of achievements, then the Department of Urban Engineering is the place for you.

Department of Urban Engineering Projects in the World

Viet Nam

Wastewater surveillance for investigating the prevalence of antimicrobial resistance genes



Bangladesh

Role of NGOs in public and private land development: The case of Dhaka city



Palau

Sustainability assessment of the dietary life in island communities



Japan

Strategic planning research for a local energy system in Fukushima municipalities to recover from the Great East Japan Earthquake



USA

Urban systems design research and studio with Georgia Institute of Technology and other institutions



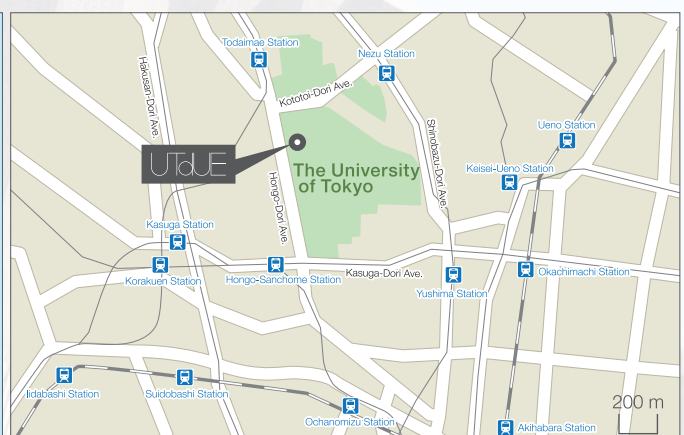
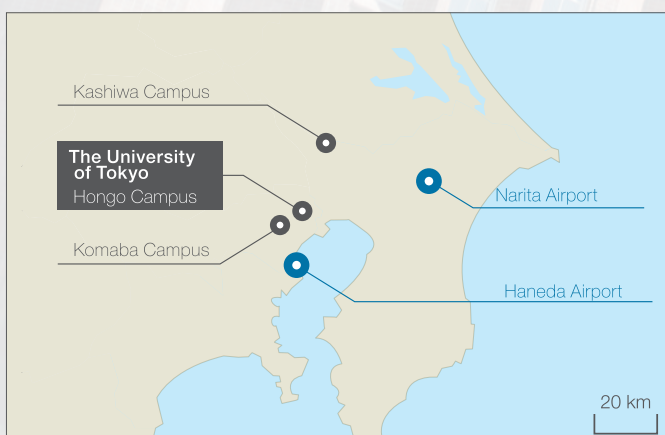
Philippines

Analysis of emerging contaminants in drinking water sources



Published in April 2025

The University of Tokyo Maps



UTdUE

7-3-1 Hongo, Bunkyo-ku, Tokyo 113-8656, JAPAN
Department of Urban Engineering,
Graduate School of Engineering, The University of Tokyo
Tel. 81-3-5841-6215 Fax. 81-3-5841-0370
E-mail to Foreign Student Office: fso@ue.t.u-tokyo.ac.jp